

(as of May 1, 2025)

# Number of Students / Number of Staff

## Number of Students

### Undergraduate

Undergraduate School	Regular Students
College of Liberal Arts and Sciences	389
Faculty of Letters	767
Faculty of Law, Politics and Economics	1,594
Faculty of Education	1,622
Faculty of Science	882
Faculty of Engineering	2,629
Faculty of Informatics	205
Faculty of Horticulture	827
School of Medicine	715
Faculty of Pharmaceutical Sciences	480
School of Nursing	340
<b>Total</b>	<b>10,450</b>

### Graduate

Graduate School	Regular Students	
	Master's Program	Doctoral Program
Humanities and Studies on Public Affairs	99	84
Education	148	–
Engineering	–	1
Science and Engineering	1,353	324
Informatics	–	21
Horticulture	260	75
Medical and Pharmaceutical Sciences	150	660
Nursing	72	68
Graduate Degree Program of Global and Transdisciplinary Studies	7	–
<b>Total</b>	<b>2,089</b>	<b>1,233</b>

### Professional Graduate

Professional Graduate School	Regular Students
Law School	113
Education	37
<b>Total</b>	<b>150</b>

## Number of Staff

(as of May 1, 2025)

	Executive Director	Faculty & Graduate	Center & Others	University Hospital	Library	Administrative Bureau & Area Administration Departments	Internal Audit Office	Total
President	1							1
Executive Vice President	7							7
Auditor	2							2
<b>Sub Total</b>	<b>10</b>							<b>10</b>
Professor		322	63	15				400
Associate Professor		252	58	17				327
Lecturer		60	24	37				121
Assistant Professor		175	73	159				407
Research Associate		1						1
<b>Sub Total</b>		<b>810</b>	<b>218</b>	<b>228</b>				<b>1,256</b>
Research Fellow		14	29	9				52
Attached School Teacher		97						97
Medical Staff		1	4	1,445				1,450
Admin. Staff		27	29	171	23	539	4	793
<b>Sub Total</b>		<b>139</b>	<b>62</b>	<b>1,625</b>	<b>23</b>	<b>539</b>	<b>4</b>	<b>2,392</b>
<b>Total</b>	<b>10</b>	<b>949</b>	<b>280</b>	<b>1,853</b>	<b>23</b>	<b>539</b>	<b>4</b>	<b>3,658</b>

# International Student Enrollment

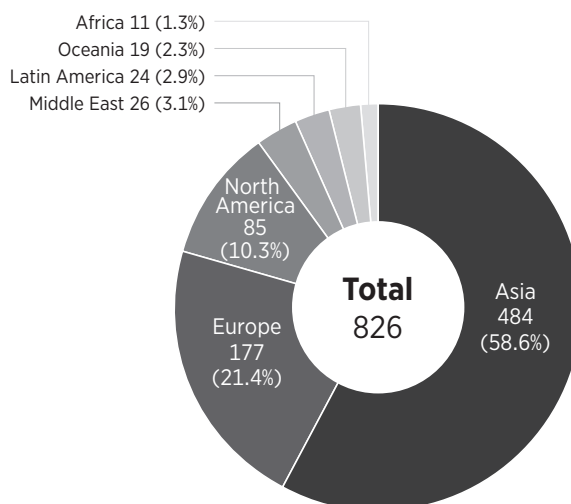
Region	Countries / Area	Undergraduate	Master's Program	Doctoral Program	Others	Total
ASIA	Bangladesh			4 (2)	1	5 (2)
	Cambodia		1	1		2 (0)
	China	68	191	233 (4)	452 (2)	944 (6)
	Hong Kong	2 (2)			4	6 (2)
	India	2 (1)		3 (2)	46	51 (3)
	Indonesia	4 (4)	14 (8)	30 (15)	175 (3)	223 (30)
	Lao People's Democratic Republic			1 (1)		1 (1)
	Malaysia	1		2	3 (2)	6 (2)
	Mongolia	2 (2)	2 (1)		2	6 (3)
	Myanmar			5 (2)	6	11 (2)
	Nepal			2	1	3 (0)
	Pakistan	1			3	4 (0)
	Philippines	1	2 (2)	5 (5)	1	9 (7)
	Republic of Korea	43 (9)	14 (1)	10	75 (2)	142 (12)
	Singapore		1 (1)		2	3 (1)
	Sri Lanka		1 (1)			1 (1)
	Taiwan	3	6	5	78	92 (0)
	Thailand		6 (6)	17 (4)	50	73 (10)
MIDDLE EAST	Viet Nam	2 (1)		1	7 (2)	10 (3)
	Afghanistan		1			1 (0)
	Iran	1 (1)				1 (1)
AFRICA	Turkey			2	7	9 (0)
	Algeria				1	1 (0)
	Burkina Faso			1		1 (0)
	Egypt			1		1 (0)
	Ethiopia			1		1 (0)
	Ghana			1 (1)		1 (1)
	Kenya			1	1 (1)	2 (1)
	Nigeria			1		1 (0)
	South Africa			1		1 (0)
OCEANIA	Zimbabwe				2 (2)	2 (2)
	Australia				3 (1)	3 (1)
NORTH AMERICA	Papua New Guinea				1 (1)	1 (1)
	Canada				3	3 (0)
LATIN AMERICA	U.S.A			1	40	41 (0)
	Brazil		1 (1)		3	4 (1)
	Costa Rica		1 (1)	1 (1)	1 (1)	3 (3)
	El Salvador			1	1 (1)	2 (1)
	Guatemala		2 (2)			2 (2)
EUROPE	Mexico		2 (2)	1	55	58 (2)
	Panama		2 (2)	1	1 (1)	4 (3)
	Peru	1		1 (1)	1 (1)	3 (2)
	Armenia				1 (1)	1 (1)
	Croatia		1			1 (0)
	Denmark			1		1 (0)
	Finland				9	9 (0)
	France			2	15	17 (0)
	Georgia				1	1 (0)
	Germany		1	2	47	50 (0)
	Greece	1 (1)			2	3 (1)
	Hungary			1	1 (1)	2 (1)
	Italy				7	7 (0)
	Kazakhstan				2	2 (0)
	Lithuania				1	1 (0)
	Netherlands	1			3	4 (0)
	Norway				3	3 (0)
	Poland	1			3 (1)	4 (1)
	Portugal				1	1 (0)
	Romania	1 (1)				1 (1)
	Russian Federation	1 (1)	1 (1)		5	7 (2)
	Slovakia				1	1 (0)
	Spain				9	9 (0)
	Sweden				22 (1)	22 (1)
	Switzerland				2	2 (0)
	Tajikistan		1 (1)			1 (1)
	Ukraine	1 (1)				1 (1)
	United Kingdom				17	17 (0)
	Uzbekistan		2 (2)			2 (2)
	Total	137 (24)	253 (32)	340 (38)	1,178 (24)	1,908 (118)

( ) shows the number of international students funded by Ministry of Education, Culture, Sports, Science and Technology of Japan

# International Researcher Exchange

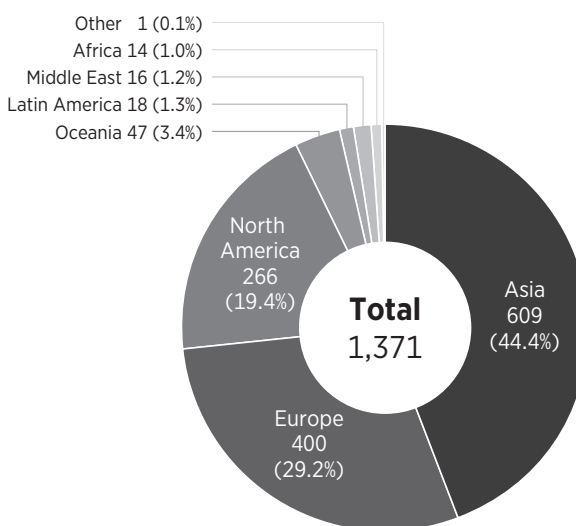
## International Researchers at Chiba University

Asia	484
Europe	177
North America	85
Middle East	26
Latin America	24
Oceania	19
Africa	11
Total	826



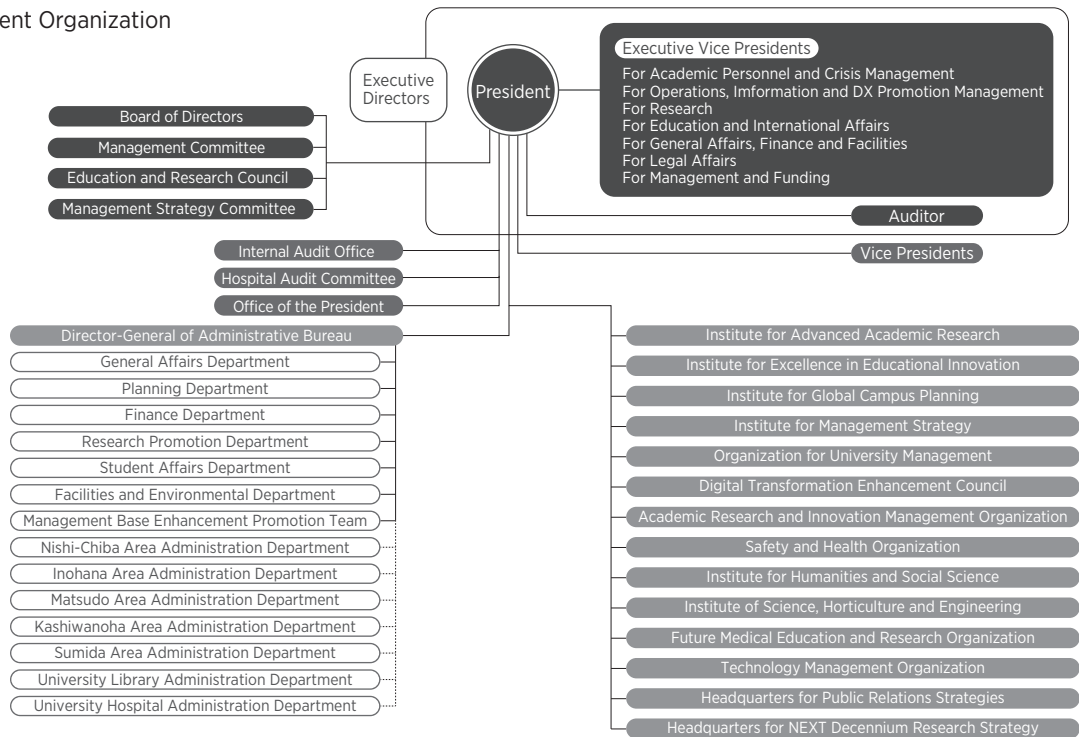
## Chiba Univ. Researchers Going Abroad

Asia	609
Europe	400
North America	266
Oceania	47
Latin America	18
Middle East	16
Africa	14
Other	1
Total	1,371

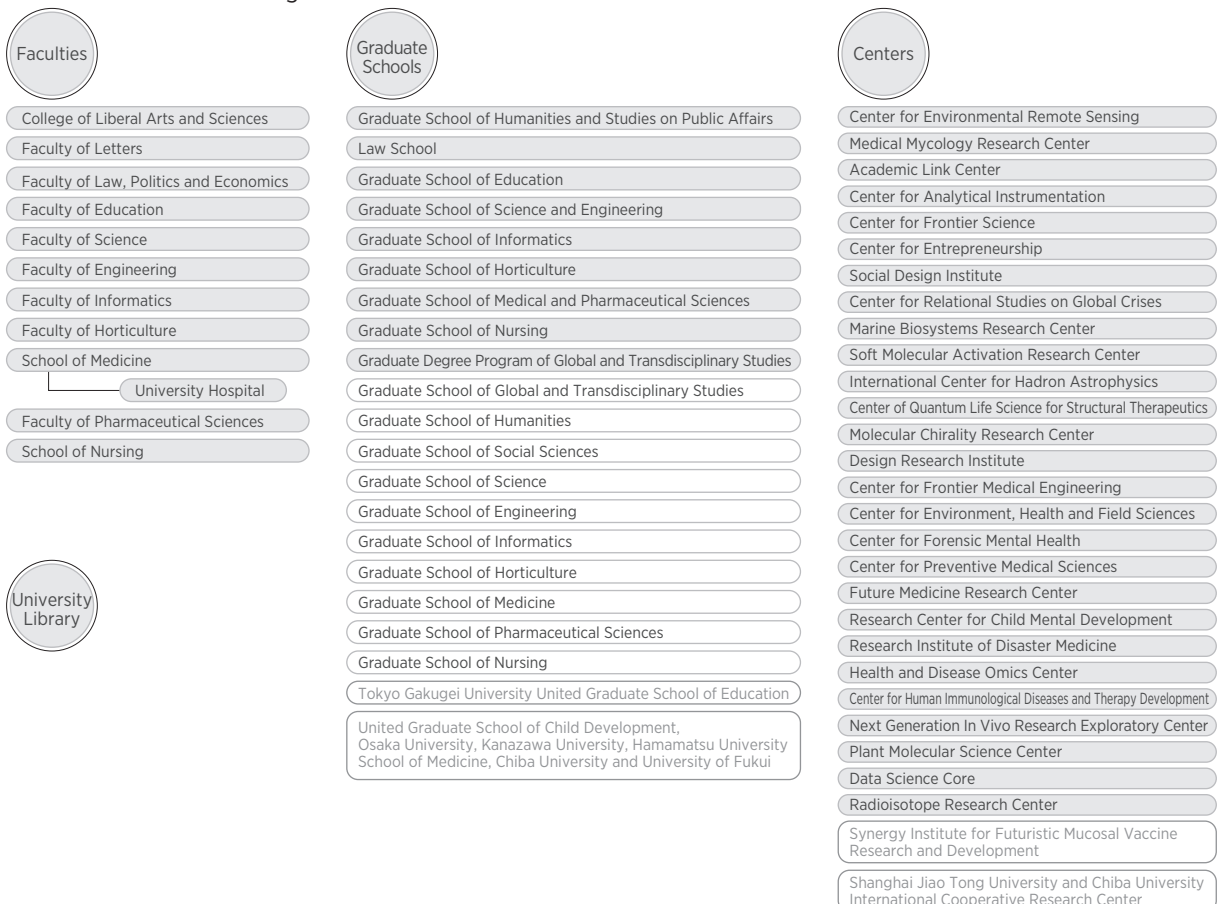


# Organization Chart

## Management Organization



## Education and Research Organization



# Administrative Staff

## Executive Directors

President	YOKOTE Koutaro
Executive Vice President for Academic Personnel and Crisis Management	NAKAYA Haruaki
Executive Vice President for Operations, Information Management and DX Promotion	GOTO Hiroko
Executive Vice President for Research	SAITO Tetsuichiro
Executive Vice President for Education and International Affairs	OZAWA Hiroaki
Executive Vice President for General Affairs, Finance and Facilities / Director-General of Administrative Bureau	MARUYAMA Hiroshi
Executive Vice President for Legal Affairs	HORI Yutaka
Executive Vice President for Management and Funding	IWASAKI Toshihiro
Auditor	OI Tadashi
Auditor(External)	YAMAMOTO Tomoko

## Vice Presidents

for Educational Reform and Support	TAKEUCHI Hiroya
for Admissions	SATO Satoshi
for Research	HANEISHI Hideaki
for Research and Academic-Industrial Collaboration	MOMOHARA Arata
for Research and Regional Cooperation	HATTORI Katsumi
for Research and Regional Core	NAKAJIMA Hiroshi
for Medium-Term Goals and Plans	MORIBE Kunikazu
for Public Relations, Diversity Promotion and Harassment Prevention and Response	MASAKI Harue
for Attached Schools and Teacher Education	SADAHIRO Saiko
for University Hospital	OHTORI Seiji

## Deans

College of Liberal Arts and Sciences	WADA Ken
Faculty of Letters	UCHIAYAMA Naoki
Faculty of Law, Politics and Economics	TACHIBANA Towa
Faculty of Education / Graduate School of Education	FUJIKAWA Daisuke
Faculty of Science	MATSUURA Akira
Faculty of Engineering	ITO Tomoyoshi
Faculty of Informatics / Graduate School of Informatics	SHIODA Shigeo
Faculty of Horticulture / Graduate School of Horticulture	MOMOHARA Arata
School of Medicine	MIKI Takashi
Faculty of Pharmaceutical Sciences	OGRA Yasumitsu
School of Nursing / Graduate School of Nursing	MASUJIMA Mariko
Graduate School of Humanities and Studies on Public Affairs	YONEMURA Chiyo
Law School	KITAMURA Kentetsu
Graduate School of Science and Engineering	ITO Tomoyoshi
Graduate School of Medical and Pharmaceutical Sciences	MANABE Ichiro

## Chair of Graduate Program

Graduate Degree Program of Global and Transdisciplinary Studies	KAMISATO Tatsuhiro
---	--------------------

## Directors

University Library / Academic Link Center	TAKEUCHI Hiroya
University Hospital	OHTORI Seiji
Center for Environmental Remote Sensing	HATTORI Katsumi

Medical Mycology Research Center	SASAGAWA Chihiro
Center for Analytical Instrumentation	ARAI Takayoshi
Center for Frontier Science	TERAUCHI Fumio
Center for Entrepreneurship	OZAWA Hiroaki
Social Design Institute	ISHIDO Hikari
Center for Relational Studies on Global Crises	SAKAI Keiko
Marine Biosystems Research Center	TOGASHI Tatsuya
Soft Molecular Activation Research Center	ARAI Takayoshi
International Center for Hadron Astrophysics	YOSHIDA Shigeru
Center of Quantum Life Science for Structural Therapeutics	MURATA Takeshi
Molecular Chirality Research Center	ISHII Hisao
Design Research Institute	UEDA Akira
Center for Frontier Medical Engineering	YU Wenwei
Center for Environment, Health and Field Sciences	WATANABE Hitoshi
Center for Forensic Mental Health	MIKI Takashi
Center for Preventive Medical Sciences	SAKURAI Kenichi
Future Medicine Research Center	HANAOKA Hideaki
Research Center for Child Mental Development	MIKI Takashi
Research Institute of Disaster Medicine	TANAKA Tomoaki
Health and Disease Omics Center	KANEDA Atsushi
Center for Human Immunological Diseases and Therapy Development	MOTOHASHI Shinichiro
Next Generation In Vivo Research Exploratory Center	KOSEKI Haruhiko
Plant Molecular Science Center	YAMAZAKI Mami
Data Science Core	NISHIUCHI Hiromu
Radioisotope Research Center	UEHARA Tomoya