

Environmental and Energy Policies of Chiba University

Since the Industrial Revolution, humankind has developed our activities using abundant energy resources. As a result, we are now faced with various environmental problems, such as global warming, pollution by chemical substances and loss of biodiversity of living things. The environment, which is the basis of our subsistence, is threatened by environmental burdens produced by human activities. In addition, we need to continue our efforts to solve environmental, social and economic problems while leaving no one behind to achieve the Sustainable Development Goals (SDGs) adopted at the United Nations Summit. Chiba University will contribute to society with collective knowledge, acting as an education and research institution, to improve the world situation at present as well as in the future.

To this end we will take the following actions:

1. Combining natural and social sciences, we advance the practice of environmental education and research, in cooperation with our affiliated schools.
2. We promote energy and resource saving measures by cycling the use of resources, buying goods considering the environment, and protecting vegetation on our campus. We also manage the safe use of chemical substances to prevent pollution. Through these activities we realize a lush campus with a light environmental load. Above all we understand and comply with legal requirements about the environment and energy which Chiba University agrees with.
3. The environmental and energy management system is constructed and operated mainly by the students. We also encourage voluntary activities by students, aiming at a campus where a variety of environmental programs are put into practice.
4. We practice our environmental and energy management system while reflecting the opinions of the local community with reflection of their opinions.
5. We will keep energy efficiency at the top level among national universities and improve it continuously. We also support designing products and drafts of service and facilities which lead to improvement in energy performance.

Based on this policy, we establish the targets, take actions to realize them, and consider the environmental management system by auditing the actions for continuous improvement of the system. This environmental policy is documented and communicated to the people concerned, including the faculty, staff and students of Chiba University, and related business people who are usually stationed there, and released to the public in a document and on the website.

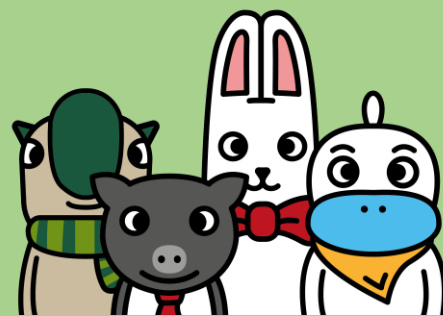


CHIBA
UNIVERSITY

April 1, 2004 Enactment
April 1, 2008 Second revision
July 24, 2013 Third revision
April 1, 2019 Fourth revision

President of Chiba University
Yokote Kotaro

Sustainable Campus Made by Students





“SDGs”, which were adopted by the United Nations in 2015, are the common goals of the international community. They consist of 17 goals covering a wide range of issues, from environmental problems to gender equality, and 169 targets. Chiba University’s efforts, which are applicable to the 5 pillars of our “Environment and Energy Policy” are introduced including the relevance to each of the SDGs 17 goals below:

1. Environmental education and research at a university level

In addition to promoting research on the environment, we provide education related to the environment at each undergraduate and graduate school.



Botanical factory



Class



Events at the affiliated kindergarten

A list of environment related courses can be found here



2. Creation of an environment-friendly “Green Campus”

We do daily energy and resource conservation, garbage separation, and safe management of chemical substances. We are also engaged in various environmental presentation activities such as greening and the 3Rs.



Composting of fallen leaves



Secondhand Book Fair



Introduction of the paper straws



Posters for energy conservation



3. Student-centered Creation and Operation of the Environmental Management System

Students participate actively with a training instructor and auditor on ISO as well as making minutes of the audits.



Basic Training about the management system



Internal Audit



External Assessment



Sustainability Report



4. Activities within the local community

We work on raising awareness of environmental consciousness by conducting environmental activities in collaboration with companies and participating in environmental events.



Agapanthus Maintenance



Participating in Eco-Pro event



Chiba Winter Fes



Children's Eco-Festival



5. Keeping the Top-level Energy Efficiency among National Universities

We've taken measures such as raising awareness of energy saving, increasing energy efficiency of devices and utilization of natural energy.



Air Conditioner Filter Cleaning



Solar power generation



Events for energy conservation



Public awareness stickers

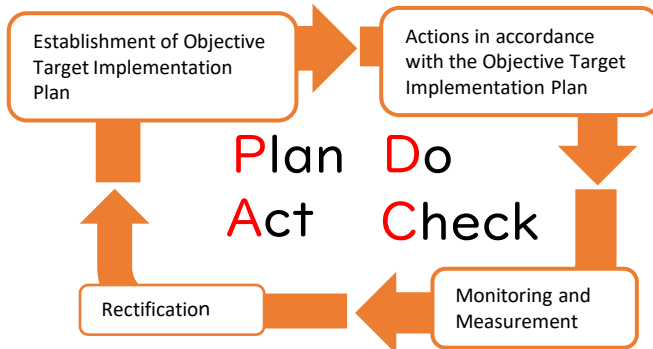


Long term goal “Chiba University aims to achieve RE100 by 2040.”

Chiba University declared that it aims to achieve RE100 which means that the University will use 100% renewable energy by 2040.

Operation of Environmental Management Systems in accordance with international standards

Chiba University acquired the certification of ISO14001, which is an international standard of the environmental management system in 2005, and in 2013, it acquired the certification of ISO50001 which is an international standard of the energy management system alone at universities in Japan. (In 2019 ISO50001 was a self-declaration.)



Environmental and Energy Management Systems (EMS and EnMS) are mechanisms for the continuous improvement of environmental protection and energy efficiency to manage an organisation by considering those issues. We conduct more environmentally friendly activities based on our policies by following the “PCDA cycle”.

※EMS : Environmental Management System
EnMS : Energy Management System

Operational effects of the environment and energy management

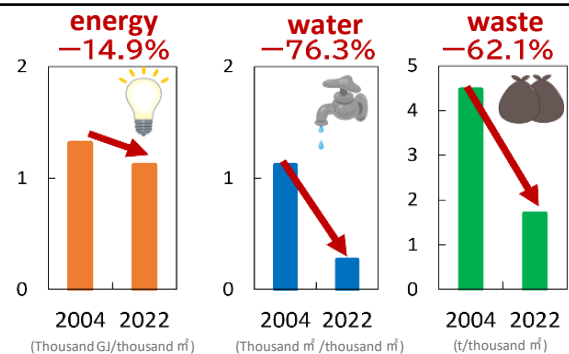
Educational effects

The activities that the Student Committee for EMS are engaging in are unitized. In addition, students who meet requirements, such as to work for 3 years, are awarded credits. The number of students and graduates who have these credits is 729 over 19 years up to 2023. In a questionnaire for graduates, more than 90% of them said that “The activities of the Student Committee were helpful in their work after graduating the university”.

Environmental effects

Energy and water consumption per building floor area and amounts of general waste emissions have been significantly reduced compared to fiscal 2004 before the ISO acquisition.

Consumption and emissions per building floor area



Economic effects

We succeeded in reducing costs as well as the amount of utilities used and waste. In particular, we have reduced utility costs by 140 million yen in 3 years since ISO was acquired. However, despite a reduction in electricity consumption in 2022 compared to the previous fiscal year, electricity bills have increased by 1.5 times due to the recent surge in electricity prices. Further energy-saving efforts are needed.

Social effects

Here are some of the major awards received:

- 25th Earth Environment Award, Minister of Education, Culture, Sports, Science and Technology Award (2016)
- Fiscal Year 2017 Minister of the Environment Award for Activities to Prevent Global Warming, Practice and Promotion Division
- International Sustainable Campus Network Award 2017 Excellence in Student Leadership
- International Green Gown Awards 2017-2018 Student Engagement Award
- Sustainable Campus Award, Student Activities Division, 1st (2015), 3rd (2017), 7th (2021), 9th (2023)
- 23rd Environmental Communication Award, Special Project Award for Promoting Environmental Consideration (2019)
- ASCN (Asia Sustainable Campus Network) Annual Conference, Excellence Award (2022), High-Quality Education Award (2023)



What is the Student Committee for EMS?

It was established as an organization of Chiba University in 2003. There are about 300 students from the first grade to the third grade every year and they operate EMS and EMnS. Our organization's activities are credited as "Environmental Management System Practice", a universal education course. Also, students learn about EMS and EnMS, environmental laws and regulations, and moreover how to proceed with work, planning, and practice them in actual activities and situations. ISO student committee works on many activities like enlightenment of energy and resources saving, environmental education, revegetation, and environmental maintenance in Chiba University, creation of the sustainability report, enlightenment of SDGs, the exhibit of some events. In addition, we cooperate with some companies and try several kinds of projects. We acquired NPO corporate status in 2009. And we're working on activities such as an on-site eco class and Satoyama conservation while interacting with companies and communities.



Nishi-Chiba and Inohana campuses



Matsudo and Kashiwanoha campuses

Environmental Management System Practice

- **Practice I** - In addition to learning professional basic knowledge about the operation of EMS and EnMS and audit methods, the committee members deepen their understanding by joining various activities as committee members.
- **Practice II** - Based on learning in Module 1, you practice essentials for EMS and EnMS operation, such as an internal audit and external assessment. You will also play an important role in the student committee.
- **Practice III** - We will utilize the experience at Chiba University to intern at municipalities and companies operating EMS, learn about EMS, and make recommendations.
- **Professional Practicum** - We target students who are actively engaged in the core operations of the university's EMS within the Environmental ISO Student Committee, carrying out activities with advanced skills. Over the course of one year, students will practice goal setting for issue resolution, annual planning, scheduling, task organization, role assignment, progress management, reporting, and more.

Environmental and Energy Management Practitioner at Chiba University

This is an on-campus qualification which is given by the President to students who have worked for a year as a committee member after acquisition of credits of Practice II. It is useful for job hunting. It shows to society that they are students who have specialized knowledge about EMS and EnMS which has been learned through their working experience at Chiba University.



Practitioner Certification Ceremony

Cooperation project with companies

Recently, the student committee has worked with several companies and it has been a valuable experience for students. The committee "Hang a rainbow from Chiba to the future ~Chiba university x Keiyo Bank ecological project ~" started in 2017 for achieving SDGs and community's enlightening of environmental awareness. Students' opportunities to study society through these activities are also a purpose of the project.

(Details http://www.keiyobank.co.jp/ir/eco_project/)

Moreover, we work on projects with cooperation, including ZOZO, Inc., Mitsubishi Oji Paper Sales Co., Ltd., Epson Sales Japan Corporation, SOGO Chiba, Chiba Television Broadcasting Corporation.



● Contact Us

Publisher : Chiba University Environmental ISO Secretariat

HP : <https://kankyo-iso.chiba-u.jp>

Mail : kankyo-iso@office.chiba-u.jp

Tel : 043-290-3572

Planning and editing : Chiba University the Students Committee for EMS

HP : <http://chiba-u-siso.xrea.jp/chibasiso/> (students committee)

<http://npo.chiba-univ.net> (NPO)

Mail : Nishi-Chiba · Inohana campuses : iso-student@chiba-u.jp Matsudo · Kashiwanoha campuses : iso-student-m@chiba-u.jp

X : @chibaiso Instagram : @chibaiso_

Editor : Fukase Ayane, Koshiyama Naoki from Faculty of Law, Politics and Economics

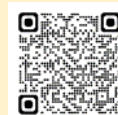
● Related sites

① Chiba University's Environmental Efforts / Sustainability Report

<https://www.chiba-u.ac.jp/general/approach/environment/>

② [Movie] Introduction of student-centered environmental management systems

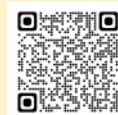
<https://youtu.be/cOVn3-D2dRM>



Secretariat HP



student committee HP



NPO HP



Related sites①



Related sites②

Dear students and faculty members of Chiba University

The students and the faculty members are the core of “Do”, which is one of the important parts of the PDCA cycle in the environmental management system at Chiba University. Please cooperate with the ecological activities which you can achieve in your daily life.

Energy

When leaving a room, turn off lights and air conditioners. In addition, adjust the air conditioners so that the room temperature is 28°C or higher in summer and 19°C or lower in winter.

Garbage sorting

Sort out used cans, glass and plastic bottles according to recycling boxes when you throw them away. We are collecting empty contact lens cases and plastic bottle caps for beverages in front of the Life Center at Nishi-Chiba campus.

Handling chemicals

When you conduct an experiment, refer to the safety manual published by the Safety and Health Organization at the university and follow your supervisor's instructions. Handle and store toxic substances and high-pressure gas cylinders appropriately according to the laws.

Paper

Try to reduce paper usage; for example, utilizing online and electronic media, use the rear side of used paper, double-sided and multi-page printing.

My bottle

In order to reduce disposable containers such as plastic bottles, have your own insulated bottle which is eco-friendly.

Passive smoking prevention

Smoking on campuses is prohibited in principle except at designated spaces. Quit smoking and be considerate of those around you for their and your health if you smoke. You are only allowed to smoke in a specific outside smoking area. Nishi-Chiba and Iino Hana facilities have no designated smoking areas."

Plastic bags

It costs 5 yen to get a plastic bag at Life Centers on campuses. Always have your own eco-bag with you to reduce plastic waste both on and off campuses.

Green Procurement

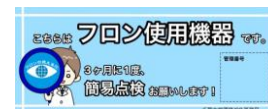
When you go shopping, choose goods and services with reduced environmental loads and consider their necessity.

Water

Water is a finite resource and even one drop of water is not free. Save water.

Equipment using refrigerants, such as Freon, requires a simple inspection every three months (under the Fluorocarbons Emission Control Law)

This inspection applies to all commercial equipment filled with fluorocarbons as refrigerants. For instance, freezers, centrifugal cooling devices, incubators, air conditioning systems, chillers, etc., bearing stickers with phrases like 'Fluorocarbons Emission Control Law, Type I Designated Product' must undergo a simple inspection. Please download the inspection record from the Facility Environment Department's website and perform the necessary checks.



Sticker put on target equipment

Do you know that used paper can be sold?

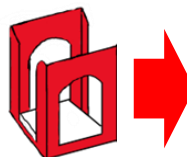
We ask for your cooperation in the collection of used paper.

① Recyclable used paper paper that can be bundled

- Copier paper
- Newspapers
- Leaflets
- Art paper
- Cardboard



Leave them at designated collection sites, which each faculty has, or in the **red** collection boxes (only at Nishi-Chiba).



Sales income of used paper (Nishi-Chiba)

(Magazines)	5.0yen/kg
(OA paper)	6.0yen/kg
(Newspapers)	10.0yen/kg
(Cardboard)	6.0yen/kg

② Mixed paper

- paper that cannot be bundled
- Wrapping paper
 - Candy boxes
 - Paper bags
 - Envelopes



Leave them in the **yellow** boxes.
※In the Research Building of Medical Science, there are collection boxes provided.



Collecting cost 0 yen/kg

③ Combustible waste dirty paper and thermal paper

- Tissues
- Drink cartons
- Receipts



Throw them away in bins for combustible waste.



Collecting cost 29yen/kg

Please follow the bicycle rules.

() = only in Nishi-Chiba campus)


- **Bicycles** are not allowed for transport within the premises.

You cannot bring in or register your which are only to ride around the university grounds. You can use your bicycle when you go to the campuses.

- Using **small-sized motor-assisted bicycles** for commuting to and moving within the campus is not permitted.

The use of specific small-sized electrically assisted bicycles, including electric kick scooters, is not allowed.

- Please feel free to use a bicycle-sharing service on Nishi-Chiba campus (**COGOO**).

The students and the faculty members of Chiba University can use COGOO for free for up to **60 minutes at a time**. You can move between the designated ports by using this service. It is unavailable off campus. 

- Please park your bicycle within **parking area for bicycles (the white lines)**.

If you don't follow the rules, your bicycle will be removed or you will be fined.

- You have to buy a bicycle **parking sticker every year** to park your bicycle on campus.

Parking sticker purchases for students and staff who use their bicycles to commute to school

Location : General Student Support Center 1F Parking management office

(in the Chiba University COOP Resistance and Part-time job Counter)

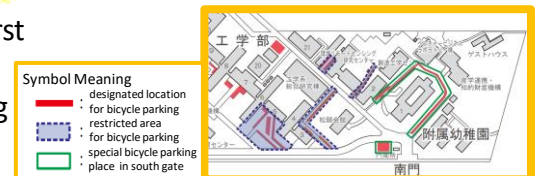
Application procedure : ① Fill out a request form- Be sure to indicate the anti-theft registration number

② Purchase the parking sticker

※On Matsudo and Inohana campuses, stickers can be purchased at the offices of each school and laboratory.

- Regarding **bicycle parking special regulation areas**. 

In front of the Faculty of Engineering Building 4・5 and 6, on the first floor of the Engineering Research Building, and at the side of the Centre for Environmental Remote Sensing, there is a special parking area for bicycles (Engineering parking area). Bicycles belonging to students from other faculties are prohibited from parking.



- Do not **park your bicycle at the prohibited spaces** around train stations.


Around Nishi-Chiba, there are many bicycles left by Chiba University students, which hinders pedestrians. Be sure to use the bicycle parking. Bicycles parked in Nishi-Chiba Station and Midoridai Station-prohibited areas may be removed by Chiba City. It costs 2,000 yen to pick up the removed bicycle.

- Follow the appropriate procedures to **throw your bicycle away**.

If you would like to throw your bicycles away, please look at the city's website in which you live to make sure about how you can do that. There are also used bicycle collection events by the Student Committee for EMS on campuses around February and March.

- Please follow the bicycle **safety rules**.

Cycling should primarily be done on the roadway, keeping to the left, with exceptions on sidewalks, where pedestrians have the right of way; also please remember cyclists should ride slowly. Riding under the influence of alcohol, carrying a passenger, riding without proper lighting at night, and riding side by side are all subject to legal penalties (Five Rules for Safe Bicycle Use). Wearing a helmet is now a legal obligation. In Chiba Prefecture, it is also mandatory to have insurance for bicycles.

- Please cooperate with **the separation of roadways**. 

The area called Yayoi Road between the library and faculty of engineering building is our separation of roadways. Bicycles must be ridden on the left of the bicycle lane. Pedestrians should not walk in the bicycle lane. When you take your bicycle on foot, you should walk in the pedestrian lane.